



East Newark Public Schools  
Early Childhood Education

**Preschool Information Session  
2023-2024**

**Collaboration with All Season Preschool**

# Classroom Requirements & Support Staff Remain the Same

Each classroom has:

- A certified teacher
- 1 or more Teacher Assistants / Paraprofessional
- **Maximum of 15 students per classroom**

And is supported by:

- Master Teachers  
In order to enhance student outcomes, master teachers coach other teachers on the development of pedagogy and practice.
- **Preschool Intervention & Referral Team (PIRT)**  
PIRT members coach teachers on the development of social-emotional practice to affect student outcomes.



# Support Staff Include

- Supervisor of Preschool contact for provider (Mrs. Rios)
- Family Worker
- Center Director
- Community and Parent Involvement Specialist (Ms. Vera)
- PIRT- Mr. Cedeno, School Psychologist





AT ALL SEASON CHILD CARE CENTER, our goal is to produce happy, intelligent, well-adjusted children. We recognize that each child has unique talents, learning styles and personalities. Our highly qualified teachers and staff are committed to working within each child's comfort zone to ensure optimal social, emotional, and educational results.



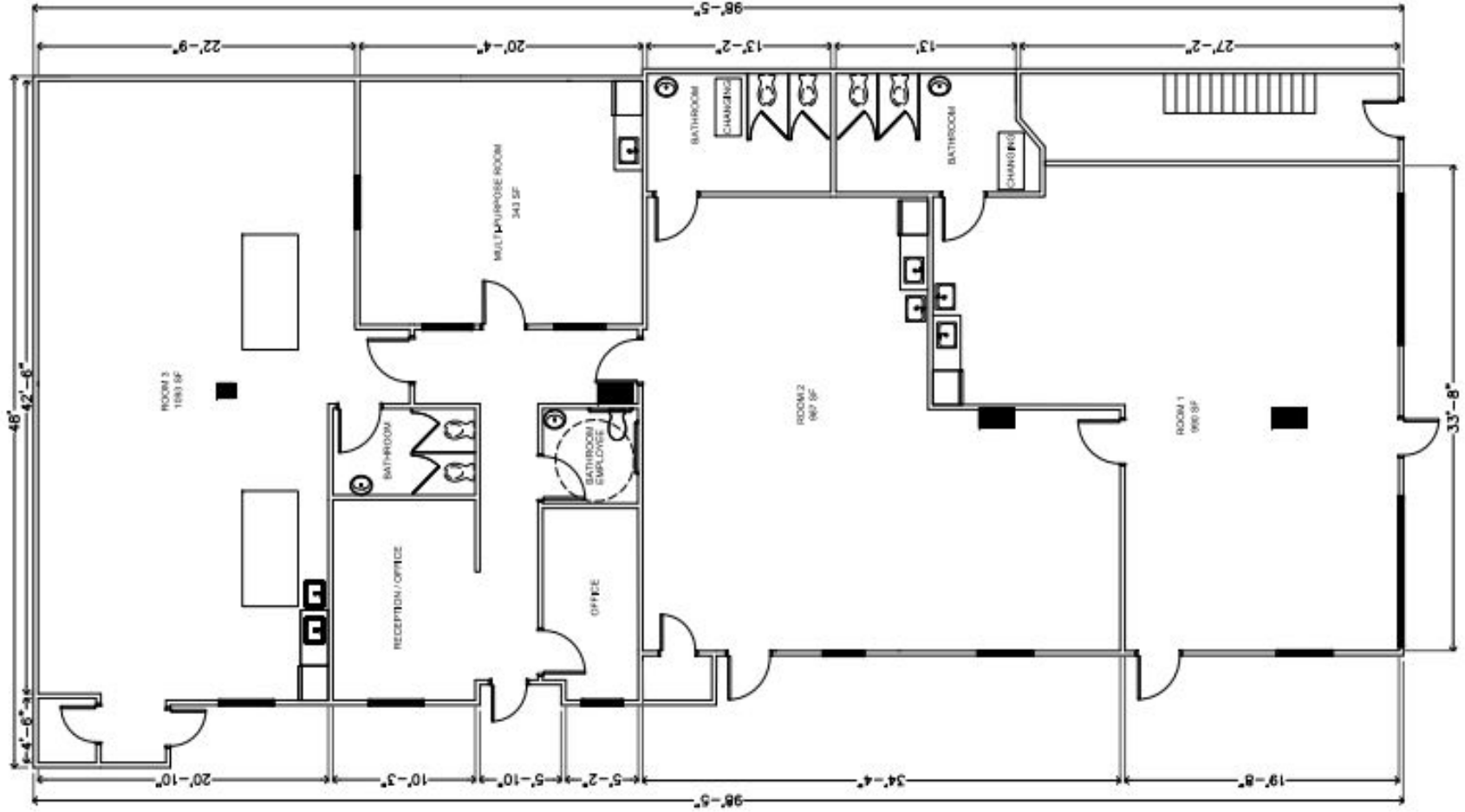


## A message from Mrs. Jenny Ron Chavez

As a Childcare Director, I want to help preschool children in their personal and educational growth. our preschoolers will begin to experience the joy of self-expression in the areas of music, arts & crafts, movement, story hour, and games in our supervised play areas. Dramatic play, outside play, music & movement, blocks, and science are a big part of their day.

Play is focused on helping children develop self-care skills, as well as encouraging independence. Providing a warm and friendly environment for the children in our community experience quality childcare.

# New Preschool Floor Plan



**FIRST FLOOR PLAN**  
 SCALE: 1/8" = 1'-0"

# Program Operating Hours

8:45 am - 2:45 pm

- The Early Childhood Program is a **full-time**, 6 hour-per-day program (as mandated by the NJDOE-DECE).
- When school is on a **half-time** schedule the hours will be from 8:45 am to 1:00pm.
- The program follows the **East Newark School** district calendar





We will offer before and after care program that can be subsidized by the county by applying through Urban League of Hudson county that will cover before and after care as well as full time summer program, if the families are not approved to subsidy the cost of the program it will be announced at the beginning of the school year.

If interested, please complete the Urban League application and email it to [NJCK@ulohc.org](mailto:NJCK@ulohc.org) with the following documents,

- Copy of your last 4 paystubs ( min 30 hrs weekly)
- Copy of your and your children social security cards
- Copy of the children birth certificate
- Copy of your picture ID
- Copy of proof of address current under your name



# Attendance Counts

**Students are expected to attend school daily, unless they are ill.**

**It is recommended that a doctor's note accompany their return if applicable.**

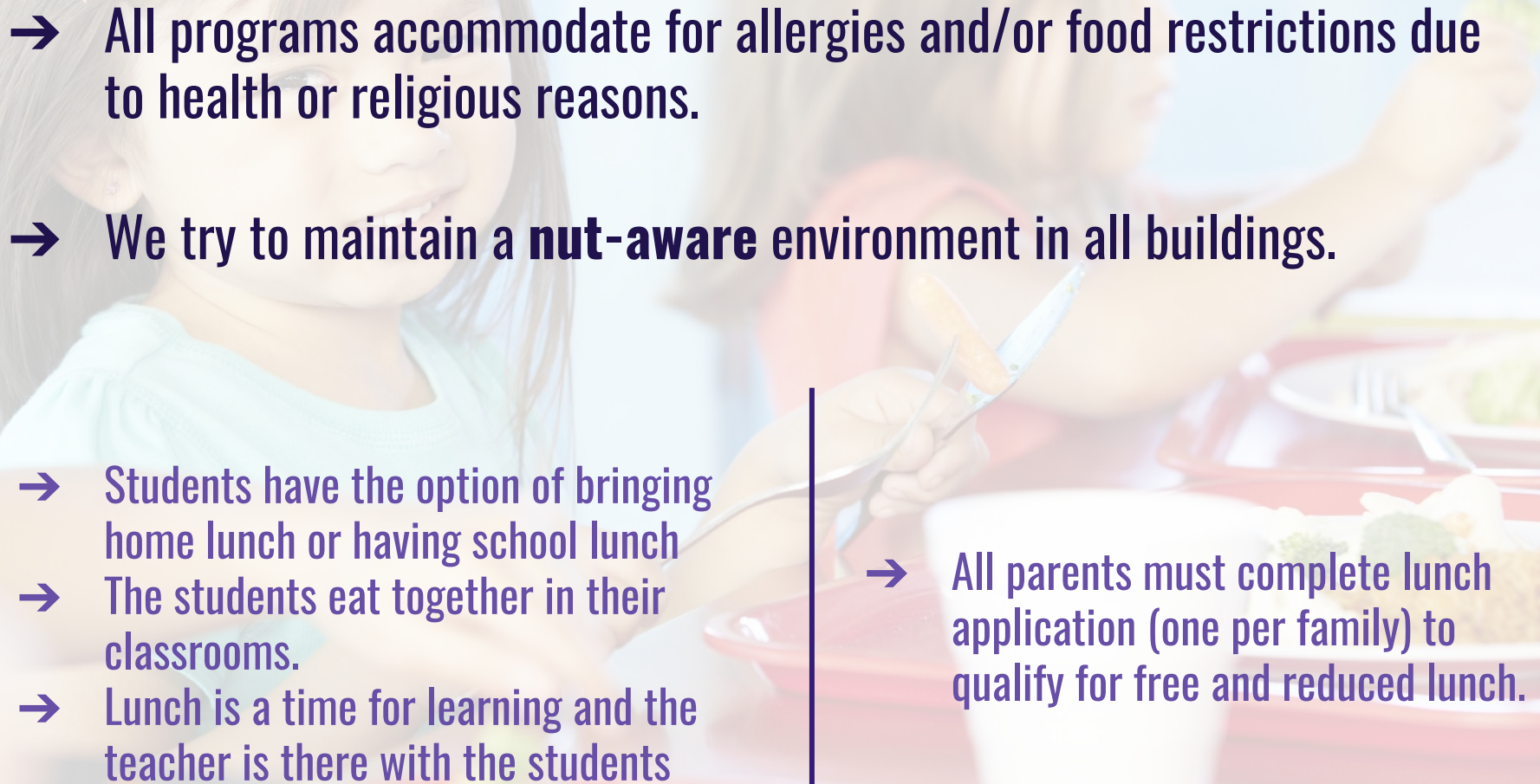
- Our NJDOE partners define Chronic Absenteeism as being absent 10% of the total expected days of school.
- As your child nears certain milestones you will receive notices to discuss attendance from the preschool leadership.
- Lack of attendance will may jeopardize your ability to participate in our program.

- Vacations:

Please be cognizant of school calendar when planning vacations. These will be logged as absences and will be reflected on the student record and school record.  
**This will be an unexcused absence.**

# Meals

---

- All programs accommodate for allergies and/or food restrictions due to health or religious reasons.
  - We try to maintain a **nut-aware** environment in all buildings.
- 
- Students have the option of bringing home lunch or having school lunch
  - The students eat together in their classrooms.
  - Lunch is a time for learning and the teacher is there with the students
- All parents must complete lunch application (one per family) to qualify for free and reduced lunch.

# Program Curriculum

## Creative Curriculum

Research-based program

One of the four approved curricula recommended by the NJDOE-DECE

Differentiated instruction model allows teachers to provide challenges and/or support where needed to ensure classroom success for students of all learning abilities.

### Central Focus:

The development of cognition and social-emotional self-regulation.

### Curriculum Goal:

To help students acquire a set of mental tools that foster school readiness and enhance academic success by using small-group instruction to promote:

- Self-regulation
- Focused attention
- Deliberate memory
- Symbolic thinking
- Early literacy
- Early numeracy

# What does a typical day look like?

The typical preschool day contains a balance of small-group and large-group activities, including fine and gross motor skill development, while allowing ample time for routines, such as eating and toileting.

A young child with a joyful expression is holding five wooden blocks in their hands, arranged to spell the word 'LEARN'. The blocks are colored blue, red, red, green, and green. The child is wearing a red shirt. The background is a soft-focus outdoor setting with green foliage.

LEARN

→ The daily schedules contain the same basic components, but may vary in the sequence of the day so that everyone has access to outdoor play and building bathrooms, without overcrowding.

Morning CHANGE TIMES

# Sample Daily Schedule

8:30 AM ARRIVAL FOR ALL STUDENTS (Student after this time will be LATE)

8:30 - 9:00 Table-top toys/breakfast

9:00 - 9:20 Morning Large Group

9:20 - 9:30 Music and Movement

9:30 - 9:50 Small Group

9:50 - 10:00 Planning Time

10:00 - 11:00 Choice Time

11:00 - 11:10 Clean Up Time

11:10 - 11:20 Music and Movement

11:20 - 11:40 Large Group

11:40 - 12:25 Lunch

12:25 - 1:25

1:25 - 1:45

1:45- 2:30

2:30- 2:50

2:50

## Afternoon

Rest Time

Read Aloud

Gross Motor (Indoor/Outdoor)

Afternoon Large Group- Roundup

Dismissal





# Screenings and Assessments

## Early Screening Inventory - Revised (ESI-R)

- Children are screened with the ESI-R upon entering the program, by the classroom teacher.
- This screening gauges several developmental domains and assists in identifying children in need of additional assistance.

## Teaching Strategies - GOLD

- We utilize Teaching Strategies-GOLD in assessing, via the collection of anecdotal evidence, for 38 research-based objectives which include predictors of school success.

# How are parents informed of their child's progress?



→ Screening and assessment information is shared with parents at **Parent/Teacher Conferences**, held 2 times per year.

→ Parents may ask their child's teacher for information regarding the child's performance in the classroom at any time by making an appointment.

→ As part of our effort to promote the home-school connection, students bring work home in their folders for parents to review and extend upon.

# Monitoring Program Quality

---

## Early Childhood Environmental Rating Scale-3<sup>rd</sup> Edition (ECERS-3)

- Comprehensively measures classroom quality in the following areas:
  - ◆ Space and Furnishing
  - ◆ Personal Care Routines
  - ◆ Language and Literacy
  - ◆ Learning Activities
  - ◆ Interactions
  - ◆ Program Structure
- Used by Master Teachers to help teacher identify potential areas of improvement
  - ◆ This information is used in the planning of future Professional Development and coaching for all teachers.



# Do the students go outside?

A photograph of three young children playing on a playground structure. The child on the left is a Black girl with braids, wearing a blue and white checkered shirt. The child in the middle is a white girl with blonde hair, wearing a white shirt. The child on the right is a Black girl with her hair in a bun, wearing a blue long-sleeved shirt. They are all smiling and holding onto the metal bars of the structure.

It is very important for children at this age to be physically active and to develop their gross motor skills.

In accordance with the *Early Childhood Licensing* requirements, children go outside daily, unless there is active precipitation, extreme cold or extreme heat.

In the event the children do not get the opportunity to go outside, the teachers will conduct gross motor activities in the school's multi-purpose room or in the classroom.

# Program Application Requirements

**FLU SHOT  
NEEDED BY  
DECEMBER!!!!\***

\*Per N.J.A.C. 8:57-4.19, preschool aged children shall annually receive at least one dose of influenza vaccine **between September 1 and December 31** of each year.

[https://nj.gov/health/cd/documents/vaccine\\_qa.pdf](https://nj.gov/health/cd/documents/vaccine_qa.pdf)

In order to apply for the East Newark School Early Childhood Education Program for the 2023-2024 school year:

- You must be a resident of East Newark.
- Your child must turn three or four years old on or before October 1, 2023.
- All applications must be completed online

# Priority Placement

---

Priority Placement will be given to:

- Children with special needs as confirmed by the Office of Social Services and student's IEP. (State regulation)
- Children who are considered **Homeless**. (State regulation)
- Date and time of the completed registration is received 2022-2023.
- Placement is determined based on availability.

*Preschool seats will be filled through the tri-pronged priority process, followed by a random lottery selection, and are based on the number of projected/approved seats shared with NJDOE-DECE*

# Preschool Locations

---

## **Location 1:**

**All Season Child Care, LLC**

**1100 Frank E Rogers Blvd South, Harrison, NJ 07029**

**All Season Childcare Center #2**

**313-315 Frank E Rogers BLvd. North, Harrison, NJ 07029**

**All Season Childcare Center #3**

**603-605 Harrison Ave, Harrison, NJ 07029**

**All Season Childcare Center #4**

**10-12 N 3rd St, Harrison, NJ 07029**

**The exact location will be announced in August**

# Frequently Asked Questions

Please visit the link:

<https://docs.google.com/document/d/1FjWiqZzgtbxPGC8JX0Z6hYihewgGS7JuUL-s70JgXUk/edit?usp=sharing>

# Preschool Organizational Chart



## Welcome to the East Newark Early Childhood Program at All Season Childcare and Learning Center

Please review this chart to learn more about our unique structure and how to most efficiently get your questions, inquiries and ideas heard.

### 1. Classroom Teachers

All Season Childcare and Learning Center and its Classroom Teachers can help you to answer any questions which you may have regarding your child's day, daily schedule and upcoming events.

(Ask your child's teacher for family advocate contact information)

### 2. Family Advocates

All Season Childcare and Learning Center has a Family Advocate assigned to the center. They can help you with medical information, lunch, and communication during the school day while the teacher is with your child.

Lavina Jango

family@asccllc.com  
603-605 Harrison Avenue  
Harrison, NJ 07029  
973-484-8803

### 3. Program Director

All Season Childcare and Learning Center Program Director can assist in questions related to general school operations and classroom curriculum, as well as, supervising the staff at the site and answer questions about the program, operational decisions and standard operating procedures for each program.

Jenny Ron Chavez  
jenny@asccllc.com

603-605 Harrison Avenue  
Harrison, NJ 07029  
973-484-8803

### 4. Supervisor of Early Childhood

East Newark School District Administrator can help you answer questions about the program, operational decisions and standard operating procedures for each program.

Nicole Rios

501 N. 3rd Street  
East Newark, NJ 07029  
nrrios@eastnewarkschoo.org  
973-481-6800



### 5. Superintendent

Dr. Bagolie has direct oversight of the programmatic aspects of the Early Childhood Education program. She ensures that our provider partners are aligned to powerful practices for all of East Newark's 3- and 4-year olds. Her design making is reserved for curriculum and the highest of management needs.

Dr. Rosaura Bagolie

East Newark Public School District  
rbagolie@eastnewarkschoo.org  
973-481-6800

THANK  
YOU